

JOIN OUR TEAM!

Kickstart your career at CMC!

The Children's Museum of Cleveland is now hiring a range of positions to grow our team.

We are seeking **self-starting, confident, and joyful individuals** that can be the friendly face of the museum and help us carry out our mission of promoting learning through play for all children ages 0-8.



**Children's
Museum
CLEVELAND**

Benefits & Perks Include:



**\$15/hour
starting rate**

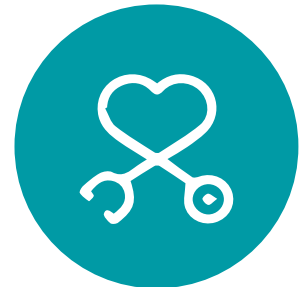


**Casual
Dress**



**Paid vacation
& sick time**

*(Available to employees working
30 or more hours per week.)*



**Health, vision
& dental insurance**

*(Available to employees working
30 or more hours per week.)*



**Unlimited free access to
Cleveland area Museums**

(For up to 4 people.)



**Free
Parking**

Position: Educator

Reports to: Director of Education

Compensation: \$15/hour

Qualifications:

- Undergraduate degree strongly preferred, but not required.
- Some experience working with children and/or in an educational environment preferred.
- Confident public speaking / teaching skills.
- Must have a valid Ohio driver's license and access to own vehicle.
- Must be up to date on vaccinations.
- Must pass background check.

Schedule: Full-time position. Weekly work schedule is Monday-Friday.

Flexibility: This position may require some seasonal changes to accommodate camps and school groups. Additional evening and weekend shifts may be required depending upon program schedules and community events (with notice.)

To Apply: Please send resume, cover letter and references to Director of Education Kelsey Tarase at ktarase@cmcleland.org

Our Organization:

As a leader in Cleveland's early childhood education community, The Children's Museum of Cleveland (CMC) provides an accessible and engaging space for children ages 0-8 to learn through play. Our eight unique exhibits provide an open-ended learning environment for children to imagine, experiment, problem-solve and explore, building a strong foundation for future learning. We are an advocate for self-directed play as one of the best ways for a young child to learn. As a vital community resource, we provide experiences that can bridge a child's learning between the Museum, home, and school.

Job Summary:

Museum Educators work as a team to lead and support open-ended, child-directed play experiences both within the Museum's exhibits and throughout the community. Primary responsibilities for this role include the implementation of educational programming that aligns with academic content standards and appropriate usage of the Museum's exhibit spaces. This includes but is not limited to: school tours, summer camps, parent and caregiver workshops, family classes, outreach, events, and other off-site programming. Educators engage directly with visitors and community members. This role will work collaboratively with ALL CMC staff across department to create a rich experience for visitors. Great communication and a team-player mentality are essential!

Physical Effort: Working with school groups and facilitating programming requires moderate physical effort including the physical and mental stamina necessary to interact with people for long periods of time.

Health & Safety Administration: This position involves exposure to large numbers of children and exposure to germs associated with working in a public attraction. Employees must be up to date on vaccinations.

Travel: Candidates must have a valid Ohio driver's license and access to their own vehicle. Travel is primarily located within Cuyahoga County, with occasional travel to other Northeast Ohio counties.

Experience: Undergraduate degree strongly preferred, but not required. Moderate experience working with children and/or families is preferred.

Essential Duties:

Reasonable accommodations may be made to enable individuals with disabilities to perform the essential functions.

- Work collaboratively with Education team to create hands-on educational experiences.
- **ALL** positions at CMC work across departmental lines. Educators will be asked to help with exhibits, guest services, cleaning and programming duties as needed. Other departments are also here to help you and your team when needed!
- Display professional and cooperative behavior in a sometimes stressful and fast-paced environment. Possess ability to quickly adapt to changes.
- Facilitate school group visits, summer-camps, field trips, outreach programs, classes, and community events.
- Lead and teach interactive early childhood programs that are based on State of Ohio learning standards, with an inquiry-based approach to learning through play. This includes program development, training volunteers/interns, supply coordination, tracking metrics, and clean-up.
- Help manage Arts & Parts exhibit including project planning, cleaning, and staffing the exhibit during Museum hours.
- Have in-depth knowledge of Museum policies, events, exhibits and programs.
- This position will also have time on the floor in our exhibit spaces interacting with guests. Educators help monitor exhibit spaces, clean, and reset props each day.

Other Duties:

This job description is not designed to contain a comprehensive listing of activities, duties or responsibilities that are required of the employee for this job. Duties, responsibilities and activities may change at any time with or without notice.